

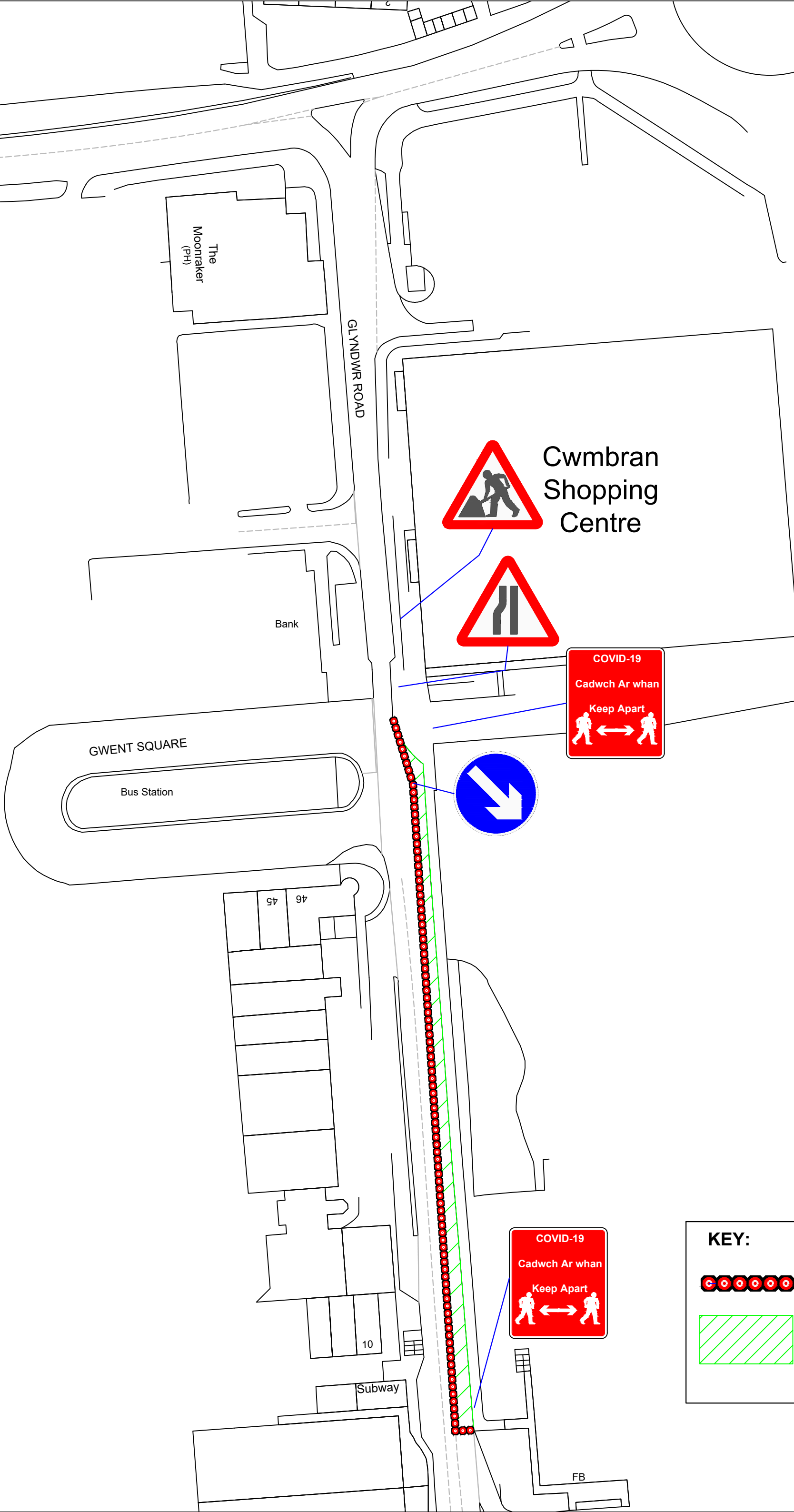
Client:  
Torfaen Council

Rev.	Dwn.	Chk.	App.	Description.	Date


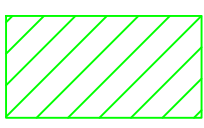
Project:  
COVID-19  
Glyndwr Road  
Footpath widening  
scheme

Drawing:  
Traffic Management  
Arrangement

Drawing no: <b>SNT001 0066 05</b>		Revision: .	
Dm: AW		App: .	
Chk: MM		Date: 25/07/20	
		Scale: NTS	



**KEY:**

-  Pedestrian Barrier(155m)
-  Suspended Car Parking Bay for Extended footway Width.